

Unity Desktop Client – Quick Start User Guide



Step 1

Install Unity from the accompanying installation file

Step 2

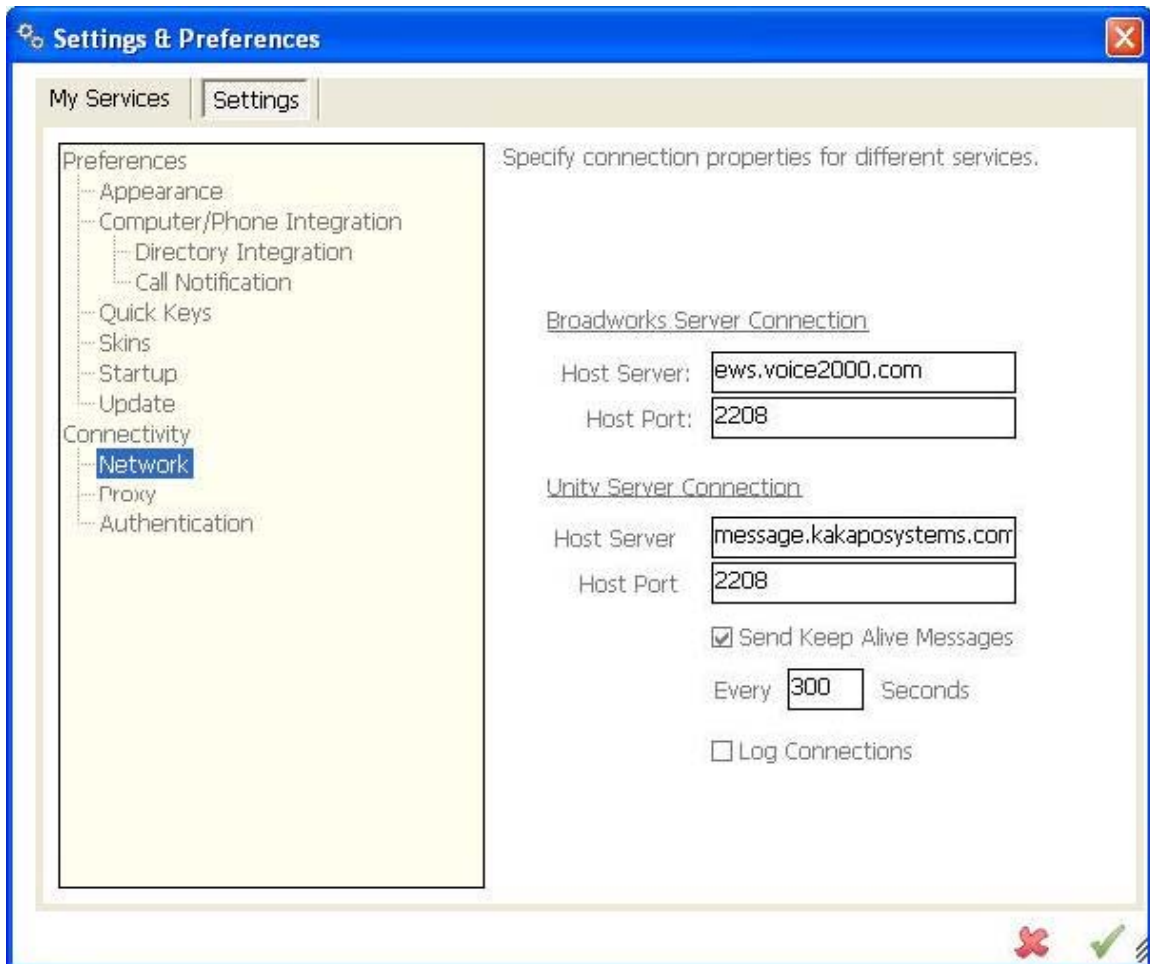
When starting Unity for the first time you will receive the following message:



Click OK

Step 3

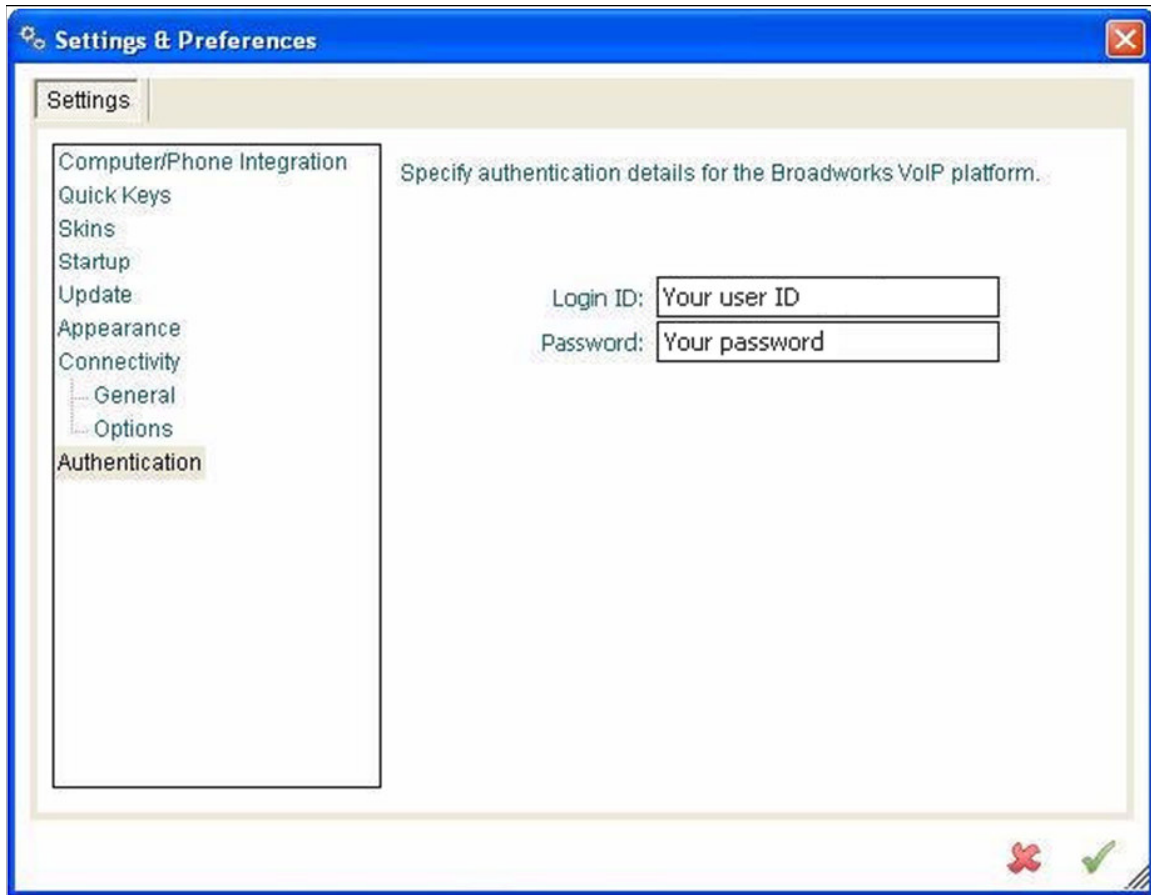
Enter the Service Provider BroadWorks® server address and port number



Step 4

Click Authentication in the left window

Enter your BroadWorks Username and Password. These are the same login credentials you would use to access the BroadWorks® CommPilot web portal.



Step 5

Click the green tick at bottom right. Unity will now login to BroadWorks® Full Help is available from Help | Contents in Unity